

# ANNUAL ACHIEVEMENTS REPORT 2014



## THE REGIONAL CENTER

BRIDGEWATER • RARITAN • SOMERVILLE

A partnership for a better tomorrow

IN SOMERSET COUNTY, NEW JERSEY

[www.regionalcenterpartnership.org](http://www.regionalcenterpartnership.org)

PUBLISHED SUMMER - 2015



## THE SOMERSET COUNTY REGIONAL CENTER

*The Somerset County Regional Center provides a mechanism for a unique level of cooperation between government and business to foster an environment of smart planning and cooperative growth utilizing resources unavailable elsewhere.*

### MESSAGE FROM THE CHAIRMAN

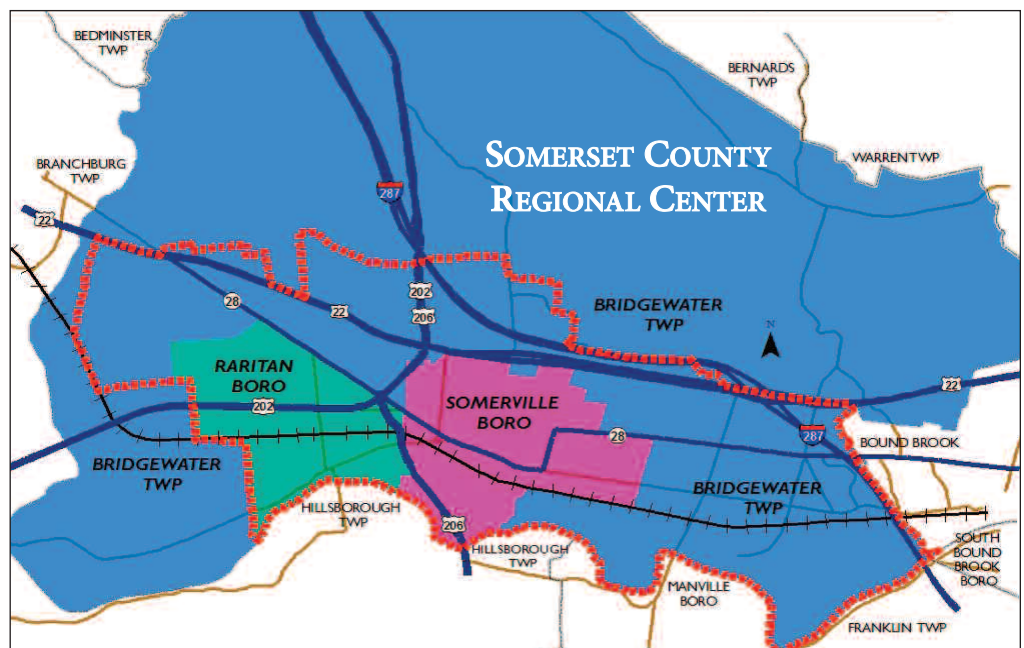
TROY FISCHER

2014 was a year of value-added for the businesses and residents of the Somerset County Regional Center communities - Bridgewater Township, Raritan Borough, and Somerville Borough.

In addition to the list of accomplishments and activities that you will discover in the following pages, the Regional Center Partnership and its consultants developed a comprehensive marketing initiative for the three communities and the County as a whole. "Amazing Things are Happening in the Regional Center," a toolkit for use by both the public and private sectors, provides a look at the history, the amenities, and the advantages enjoyed by everyone who works or lives in the Regional Center communities. As we move forward into 2015, the Amazing Things Toolkit will be distributed far and wide to support marketing efforts of realtors, economic development professionals, developers, and others whose livelihood depends on reaching out and explaining the benefits of living and working in the Somerset County Regional Center.

During the past year the Somerset County Regional Center saw a number of accomplishments that will continue to contribute to positive growth in and around the three communities. We witnessed major accomplishments by private sector developers, the Department of Transportation, New Jersey Transit, our local medical center, and many of our partners throughout the county.

I encourage you to review this report of achievement in 2014 and learn more about the impact that the Somerset County Regional Center has on the businesses and residents that call Bridgewater, Raritan, and Somerville home.



## AMAZING THINGS ARE HAPPENING IN THE REGIONAL CENTER

In early December of 2014, the Somerset County Regional Center Partnership formally introduced “Amazing Things Are Happening In the Regional Center Toolkit,” a comprehensive marketing package that focuses on the benefits, amenities, and advantages available to Somerset County businesses and residents in and near the Somerset County Regional Center.

The “Amazing Things” Toolkit includes video & Powerpoint components that function as a marketing tool to support the business attraction and retention needs of developers, the tourism industry, realtors, human resource professionals, educators, residential and commercial real estate professionals, economic development professionals, and others who desire to explain the benefits of Somerset County and the communities in the heart of Central New Jersey.

The package of materials, available to the public on DVD or thumb drive, includes two Powerpoint presentations, one that explains what a Regional Center is and what the designation enables the communities to accomplish, while the other details the “Amazing Things” that are found in and around the participating communities.

The Toolkit videos highlight the history of the region and present the “7 Virtues of the Regional Center” while outlining the significant quality of life amenities including natural features and attractions; cultural attractions, programs and events; access to services and resources; major economic initiatives and major infrastructure investments. The Toolkit showcases the Regional Center as a highly attractive location to work, live, shop and for recreation.

Troy Fischer, Chair of the Regional Center Partnership, explained that the Toolkit coordinates “all the marketing pieces from municipalities, the county, and advocacy organizations into one comprehensive marketing initiative.” He noted that the Toolkit is a dynamic document that will change and grow over time. Explaining that pieces of the program can be extracted for customized use, he reinforced the fact that the entire six-part program is available for public use.

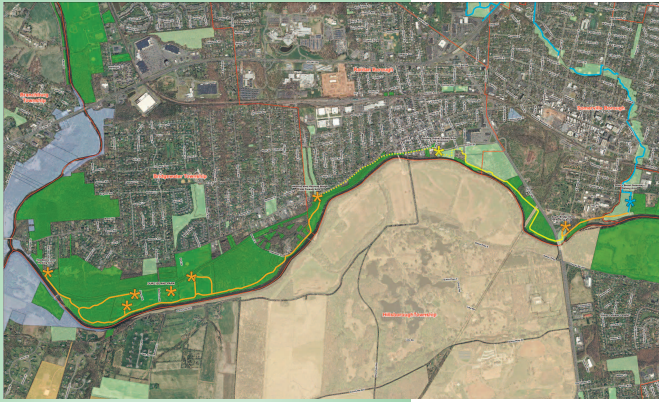
The “Amazing Things” program will be supported by social media outreach featuring the events happening every day that make the Regional Center special.

A web site, [www.rcponline.org](http://www.rcponline.org) features the entire Toolkit available for download. To order on disk or thumb drive, contact the Regional Center Partnership by email at [info@rcponline.org](mailto:info@rcponline.org) with name, organization, address and request for DVD or thumb drive.



## SOMERSET COUNTY GREENWAY CONTINUES TO LENGTHEN

Tom Boccino, representing the Somerset County Engineering Division, visited the Regional Center Partnership to provide a detailed update on the status of the expanding Raritan River Greenway/Bikeway project.



*The Greenway along the Raritan River with Somerville Borough in the upper right hand corner.*

The Raritan River Greenway extends from the confluence of the North Branch and South Branch of the Raritan River to the confluence of the Millstone River and the Raritan River; a distance of approximately 8.1 miles. The county currently owns and maintains approximately 840 acres of public open space within the Greenway.

The overall goal of the Raritan River Greenway Plan is to create a series of nodes and linked trails designed to provide pedestrian linkages between neighborhoods, commercial areas, and trail systems.

Sections of the Greenway in the Regional Center include a completed 2.5-mile stretch along Duke Island Park from the headgate to the historic Hibernia Mine railway bridge; a completed 5-mile stretch from South Bridge Street to the Peters Brook Greenway connection; a section currently in design from South Bridge Street to Orlando Drive (includes a segment under Route 206); and 0.3 miles along Orlando Drive awaiting funding.

## ENVIRONMENTAL ACHIEVEMENTS IN THE REGIONAL CENTER

The Raritan River Rain Barrel Rebate program, funded by the New Jersey Water Supply Authority (NJWSA) and administered by the Regional Center Partnership, was expanded geographically in January of 2014 to include all residents in the communities of Bridgewater, Raritan, and Somerville.

Since the program began in 2011 at least 37 properties have received rain barrel rebates, including 15 in 2014, representing a total rain barrel storage capacity of almost 3,000 gallons. Rain water collected and stored in rain barrels can be used to water the lawn, garden, wash the car, and many other uses. The NJWSA hosted a series of Peters Brook Watershed rain barrel workshops where residents built at least 25 rain barrels.

The rain barrel rebates program is being continued in 2015. Residents of the three communities who meet simple criteria are eligible to apply for a rebate. Applications may be downloaded at <http://www.regionalcenterpartnership.org>.

Another program is the River-Friendly Certification where the NJWSA works with landowners to improve water resources by implementing actions in categories including water quality and nonpoint source pollution management, water conservation, native habitat and wildlife enhancement, and education and outreach.

The Regional Center Partnership presented a unanimously passed resolution to Johnson & Johnson Information Technology (J&JIT) commemorating the River-Friendly Certification for Business for the Route 202 North facility in Raritan.

In addition, public and private sectors accomplishments were noted.

- Somerset County Park Commission Green Knoll golf course has been certified as River-Friendly
- Somerville's Vanderveer School and Bridgewater-Raritan High School have been certified as River-Friendly
- 3 Regional Center businesses (J&J Information Technology, Ethicon & Janssen) and NJ American Water received River-Friendly Certification



*Regional Center Partnership Chair Troy Fischer (r) presents a congratulatory resolution for attaining River-Friendly Certification from the New Jersey Water Supply Authority to Janice Masvidal, IT IS Senior Director, Enterprise Data Centers & Building Facilities (c) and Hugh Symonds, Senior Principal Engineer (l) of Johnson & Johnson Information Technology.*

## ONE SEAT RIDE TO NYC INITIATES & EXPANDS IN 2014

A 15-year effort by numerous Somerset County officials working closely with the Raritan Valley Rail Coalition culminated on March 3, 2014 with the maiden voyage of a one-seat ride from three Regional Center Raritan Valley Line train stations to New York's Penn Station. The first one-seat ride departed from Raritan at 8:43 A.M. and reached Penn Station at 10:09 A.M., without a transfer at Newark for the first time.

Led by Freeholder Peter Palmer, who chairs the Raritan Valley Rail Coalition, local elected and appointed officials representing the Regional Center communities of Raritan, Somerville, and Bridgewater, boarded the train at their respective stations.



NJ Transit purchased dual-mode locomotives that operate as diesel from the Regional Center to Newark's Penn Station and as electric powered through the tunnels to Manhattan. Ten trains are part of the pilot program. The one-seat ride is expected to provide significant business and residential development advantages to the Regional Center communities.

The initial success of the One-Seat ride resulted in expansion to nighttime service on Monday, January 9, 2015. Freeholder Palmer noted that the added service will make it easier for people to take the train to the city in the afternoon, have dinner, attend a Broadway show and then return on a one-seat ride. There are now five one-seat trains going daily to Penn Station and five returning to New Jersey.

## REGIONAL CENTER EARNS EXCELLENCE IN PLANNING AWARD

The Regional Center Partnership of Somerset County earned an Excellence in Planning Award from the Somerset County Planning Board, honoring the attainment of Plan Endorsement from the New Jersey State Planning Commission. The award was presented at the celebration of the 60th Anniversary of the Planning Board in February of 2014.

The Regional Center Partnership achieved a major milestone to preserve its prominent standing in the state by attaining Regional Center Plan Endorsement, a comprehensive review process that ensures the coordination of state, county, and municipal planning efforts in achieving the goals and policies of the State Planning Act. With approval from the State, the Regional Center is now in a better position to receive competitive state and federal resources, grant applications, technical assistance, and incentives to assist in accomplishing the goals for the organization's master plan.



*Bernie Navatto, Chair of the Somerset County Planning Board presents Troy Fischer (r) Chair of the Somerset County Regional Center Partnership with the Excellence in Planning award*

## 2014 CHALLENGE GRANTS AWARDED

The Regional Center Partnership awarded the 2014 round of Challenge Grants to the three member communities. The goal of the Challenge Grants is to achieve the vision for the Regional Center that includes sustainable economic development, downtown redevelopment, neighborhood revitalization, connecting the sub-centers of the Regional Center, and using natural resources to shape development that is consistent with community planning initiatives. Grants are available in amounts up to \$15,000 per community to support projects and initiatives that improve mobility between the communities, improve economic competitiveness and overall quality of life.

**Bridgewater Township** - Funding in the amount of \$15,000 was approved to construct ADA ramps at the intersection of Woodlawn Avenue (south side) and Rambler Drive. The project is part of an ongoing sidewalk initiative funded by a 2012 Regional Center Challenge Grant. Completion of the Woodlawn Avenue sidewalk will extend the pedestrian pathway to the Municipal Complex, YMCA, shopping, parks, playfields and Bridgewater Raritan High School.

**Raritan Borough** - Funding in the amount of \$15,000 was approved to update the 2006 Transit Village Study to address what has transpired in the neighborhood around the station relating to land use, zoning, property conditions, NJ Transit service, parking, etc.

**Somerville Borough** - Funding in the amount of \$15,000 was approved to initiate a study of the Borough's sanitary sewer system to identify peaks in flows within the network utilizing innovative state-of-the-art technology. Three cameras will be purchased and placed inside manhole covers to monitor data and provide an alarm in the event of a system failure or overflow. By locating the cameras in varying locations a baseline will be developed that will identify changes in water flow following wet weather, new construction, and other issues that impact flow.



Woodlawn Avenue &  
North Bridge Street

## GRANT-FUNDED DRIVER FEEDBACK SIGNS ENHANCE SAFETY

Bringing to fruition a project initiated in 2013, representatives of the Somerset County Regional Center communities submitted their recommended locations for the installation of additional Driver Feedback Signage (DFS).

With traffic calming a major goal of the Regional Center Strategic Master Plan initiative to enhance pedestrian and bicycle safety, the installation of DFS within the limits of the Somerset County Regional Center addresses quality of life issue common to the three municipalities while providing an opportunity to raise awareness of Regional Center initiatives.

The Regional Center committed \$50,000 of the \$65,211 that had been allocated in November 2012 for installation of solar-powered driver feedback signs. Twelve (12) Driver Feedback Signs, four in each Regional Center community, were purchased and installed in 2014. Installation was accomplished by the Somerset County Department of Public Works.

It is envisioned that the Driver Feedback Signage will ultimately include a representation of the Regional Center that will align with the brand developed for the "Amazing Things Are Happening in the Regional Center" initiative.



Driver Feedback Sign on  
North Bridge Street in Somerville

## COMPLETED DAM REMOVAL OPENS UP RARITAN RIVER



*One of three dams removed as part of the restoration of the Raritan River.*

John Jengo of MWH Americas, a water and wastewater consultant, reported to the Regional Center Partnership on the successful completion of the dam removal on the Raritan River. The removal of the three dams will open up a 10-mile stretch of the middle and upper portions of the river to fish migration for the first time in more than a century. The portion of the river twists through a diverse residential, commercial, and agricultural portion of Somerset County including Bridgewater, Raritan, Somerville, Hillsborough, Bound Brook, and Manville.

The project was carried out and financed by the El Paso Corp. as compensation to the public for harm to natural resources caused by past pollution at a refinery and three polymer plants that were operated by or affiliated with the El Paso Corp.

The dams removed included the Calco Dam in Bridgewater, built by the Calco Chemical Co. in 1938 to disperse chemicals from its facility; the Nevius Street Dam, built in 1901 for aesthetic purposes and later retrofitted to provide water to ponds on the Duke estate in Hillsborough; and the Robert Street Dam which was constructed prior to 1930 for purposes that are not known.

## RWJ SOMERSET BECOMES ACTIVE NEW NEIGHBOR

The approval by state and federal regulators of the merger of Somerset Medical Center (SMC) and Robert Wood Johnson University Hospital in New Brunswick resulted in a smooth transition and a valued new neighbor in the Somerset County Regional Center.

The merger reflects a nationwide trend among hospitals of all sizes to pursue operational agreements to address increasing financial challenges within the healthcare industry. The RWJ Somerset leadership assured the public that the mission of providing premier-quality, comprehensive healthcare services to residents of Central New Jersey will continue unabated well into the future with a new opportunity for growth.

RWJ is a 965-bed academic medical center with campuses in New Brunswick and Somerville. Its Centers of Excellence include cardiovascular care from minimally invasive heart surgery to transplantation, cancer care, stroke care, neuroscience, joint replacement, and women's and children's care including The Bristol-Myers Squibb Children's Hospital at Robert Wood Johnson University Hospital ([www.bmsch.org](http://www.bmsch.org)).



The Joint Commission and the New Jersey Department of Health and Senior Services have designated the New Brunswick Campus as a Comprehensive Stroke Center and the Somerset Campus as a Primary Stroke Center.

Victoria Allen, Executive Director of Marketing & Public Relations for RWJ Somerset was unanimously elected to the Regional Center Partnership as an at-large private/institutional sector voting member.

## A SINCERE THANK YOU TO BOB BZIK

At the May meeting of the Regional Center Partnership, the membership thanked Bob Bzik, retiring Director of Planning for Somerset County, for his dedication to the growth and success of the Regional Center and the County as a whole.

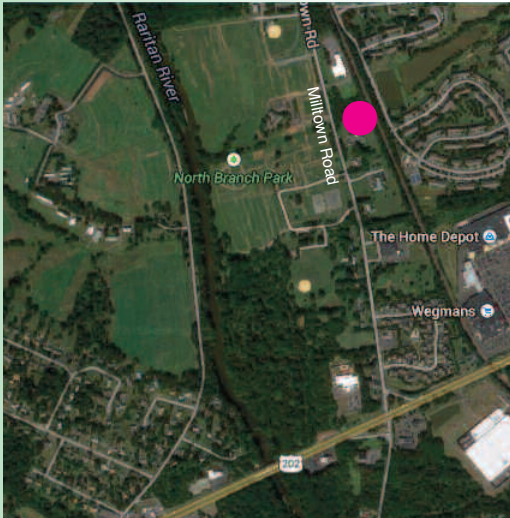


Partnership Chair Troy Fischer (l) presents resolution of gratitude to retiring Planning Director Bob Bzik.

The resolution that was presented thanked him for his 33 years with the County, 24 years serving as Director. "Bob's commitment to the Regional Center along with the support of the Somerset County Board of Chosen Freeholders, Bridgewater Township, Raritan and Somerville Boroughs, the Somerset County Business Partnership, the Somerset County Park Commission and our business and institutional-sector representatives has been essential in helping the Regional Center Partnership achieve numerous milestones, projects, and initiatives..." The resolution goes on to list 19 key factors contributing to the success of the Regional Center since its inception.

## BRIDGEWATER ADVOCATING FOR NEW RAIL STATION

In early fall Bridgewater Mayor Dan Hayes announced that the Township Committee is in active discussion with NJ Transit regarding the proposed construction of a new passenger rail station in the south western portion of the Township.



Dot indicates proposed location of rail station on Milltown Road in Bridgewater

Proposed for Milltown Road opposite North Branch Park, the station would be the second in Bridgewater and would serve the population on the western side of the Township and commuters living in Branchburg and west. The location is near the Vanderhaven Farms community and already meets many of the criteria of a Transit Village. Bridgewater's other station is next to TD Bank Ballpark on the opposite side of the township.

The Mayor expects that the station's location will make Bridgewater better able to attract the Millennial generation of 25 to 35-year olds, a growing demographic with discretionary income that will contribute to the success of local businesses.

The Mayor also announced that a new bus Park & Ride is being constructed at the intersection of Route 22 and Milltown Road.

## SOMERSET COUNTY NAMED 5TH BEST PLACE TO LIVE IN USA

Movato Real Estate blog, in a survey ranking 640 counties in 6 categories, determined that Somerset County, New Jersey is the 5th best place to live in the country. Criteria included: Unemployment rate; Median household income; Median rent; Median home price; Percent of families living below the poverty line; and High school graduation rate. According to the survey, "There's beauty, friendliness, and a ton to see and do."

## REGIONAL CENTER AUDIT REPORT FOR 2014

The Regional Center Partnership retained an independent auditor to conduct the annual audit of the Regional Center's financial records for 2014 and all financial records were found to be accurate. Treasurer Reports were presented and adopted at each Regional Center Partnership business meeting and are available for review online at [www.regionalcenterpartnership.org](http://www.regionalcenterpartnership.org) under "Minutes & Treasurer's Reports".



## RARITAN CONTINUES TO PLAN RIVERFRONT REVITALIZATION

The Raritan Borough “Riverfront Summit,” held at Duke Farms, provided an opportunity to review the Borough’s “River Town” initiative, a strategic combination of recreational, cultural, economic development, and infrastructure initiatives along the Raritan River/Orlando Drive corridor.

Attended by approximately 70 people, the Summit featured speakers from Raritan Borough, Somerset County, Duke Farms, the Somerset County Business Partnership, Rutgers University, the Central Jersey Stream Team, and John Jengo, a noted Hydrogeologist.

Major planning and infrastructure projects being considered along the riverfront corridor include the complete rezoning of the riverfront for recreational, cultural, and supportive retail uses; the reconstruction of Orlando Drive from Route 206 to Lyman Street; the creation of a Wayfinding System that will direct visitors from the Raritan Train Station to the Somerset Street business district and the riverfront; extension of the County greenway/bikeway along the Raritan; and a northern gateway into Duke Farms from the Nevius Bridge.



Nevius Street Bridge

## RESTORED SOMERVILLE FIRE MUSEUM OPENS

The restored Somerville Fire Department Museum on North Doughty Avenue opened in September. The museum is now to the public on Saturdays from 10:00 A.M. to 12:00 Noon or by appointment by calling 908-526-7098 or 908-526-4828 after 5:00 P.M. Information is available at [www.firehousemuseum.org](http://www.firehousemuseum.org).

The department is represented by artifacts from the early days of fire fighting in the borough. The building was constructed in 1888 for the West End Hose Company. Since 1999 Somerville has received over \$400,000 in historic preservation grant funding for the restoration - \$279,500 from the Somerset County Historic Preservation Grant Program and \$186,872 from the New Jersey Historic Trust.



## PARTNERSHIPS RESULT IN A RARITAN RIVER CLEAN UP

A number of groups banded together in 2014 to clean up the Raritan River of the tons of garbage that have accumulated over the years. A group that formed in 2013, known as “Just 2 Eagle Scouts,” began cleaning up sections of the Raritan River in the Regional Center communities.

Supported by the Somerset County Park Commission Rangers, Scouts, students, and adult volunteers participated in the American Rivers National River Cleanup, a nationwide community-based initiative to clean up rivers and streams and to raise public awareness about the need for healthy rivers. Also joining the effort is the Central Jersey Stream Team, a grassroots nonprofit organization dedicated to the restoration of Central Jersey waterways and surrounding land.



The initial effort resulted in the removal of 507 tires and other unwanted materials and the May 2014 effort resulted in approximately 900 tires removed along the bank of the Raritan behind the Torpey Athletic Complex in Bridgewater.

## CHIMNEY ROCK INTERCHANGE OPENS EAST & WEST BOUND



Route 22 & Chimney Rock Road

The \$70+ million Chimney Rock Road/Route 22 interchange project achieved tremendous progress during 2014 and at this writing is 80% complete. The opening of the Route 22 westbound and eastbound express lanes marked a major step.

Completion is anticipated in the fall of 2015. When complete, the area will feature a full service interchange at US 22 and Chimney Rock Road that will satisfy current and future traffic demands and meet the mobility goals of the area while providing linkages to enhance existing businesses. The project will minimize existing traffic impacts in residential neighborhoods and improve quality of life issues from a transportation standpoint.

## SOMERVILLE ADDRESSES FUTURE INFRASTRUCTURE NEEDS

Sidewalk improvements along **Veterans Memorial Drive** in Somerville were completed, accomplishing a key element of the Transit Oriented Development initiative. The project included a retaining wall along the Raritan Valley Line train tracks and new sidewalks and curbs. The project was one of seven pilot sites that are intended to enhance the county's transportation infrastructure.



Veterans Memorial Drive

In addition, the future development of North Gaston Avenue in the Borough was vetted in a series of stakeholder meetings to analyze the zoning, structures, and general conditions along the Gaston Avenue corridor between Union Avenue and East Main Street. This study, titled the "**Gaston Avenue Corridor Study**" was funded through a Somerset Regional Center Challenge grant.

Recommendations to the Planning Board included: Make no change to the PO-R zone extending along Gaston Avenue from East Main Street to East Cliff Street; Revise zoning in the B4 zone to allow growth from East Cliff Street to Union Avenue and including a portion of Union Avenue; Recommend that financial incentives be incorporated into the B4 zone district to foster redevelopment/ adaptive reuse of properties; Conduct a traffic study for Gaston Avenue and the surrounding streets including the timing of the traffic signals at East Main Street, Gaston Avenue and South Gaston Avenue.

## SOMERVILLE TOWN CENTER EARNS 2014 LAND DEVELOPMENT AWARD



Somerville Town Center Phase II

Somerville Town Center Phase II, located on West Main Street in the Borough, was the recipient of a 2014 Land Development Award from the Somerset County Planning Board. Given in the Mixed Use category, the developer is Somerville Town Center Urban Renewal, LLC (Edge-wood Properties) of Piscataway, NJ. The project encompasses 6.3 acres of a 13-acre redevelopment area proposed for 62,000 square feet of retail and 135 apartment rental units.

Planning criteria upon which the award was based includes: Redevelopment of an old obsolete retail development; High density development located in the Regional Center; A project within walking distance of the NJ Transit rail station and part of the Transit Village Community; The exterior façade will reflect the historic character and design elements of Main Street; The new South Davenport Street, will provide a more efficient traffic flow; and is a project that is consistent with the Borough's redevelopment efforts

## COMPLETED ROUTE 22 SAFETY IMPROVEMENTS

NJDOT completed a number of Short-Term Safety Improvements along Route 22 from Routes 202/206 to I-287: Reconstruction of existing shoulders to function as auxiliary lanes; • Widening existing shoulders to accommodate access to businesses; • Removal of two U-turn locations in the median; • Removal of abandoned truck weigh station; • Extending existing deceleration lane to accommodate redistributed traffic volumes from U-turn closures; • A new traffic signal at intersection of Ronson and Foothill Roads to accommodate redistributed traffic volumes from U-turn closures; • Improvements to roadway drainage system and new stormwater management basin.

## 2014 MUNICIPAL ACCOMPLISHMENTS & UPDATES

### BRIDGEWATER

Land development applications submitted in 2014 included: proposed retail/restaurant next to Honda Sport on Route 22; Wawa's use variance for a proposed food mart with fuel dispensing at Route 28/Chimney Rock Road; Seasons 52 Restaurant at the Commons Mall; and a Hampton Inn proposed at Route 22 and Ronson Road was approved.

The Township Planning Board determined the former Weyerhaeuser site in Finderne qualified as an "area in need of redevelopment" as defined by the NJ Local Redevelopment & Housing Law. The Township is pursuing a redevelopment plan consisting of a housing component.

### RARITAN

*New Jersey Monthly* magazine (September 2013) included the Borough of Raritan among the state's 100 most desirable communities.

The Stone Bridge at Raritan apartment complex on Route 202 was completed and held a Grand Opening Celebration.

Reconstruction of the Orlando Drive road surface from Route 206 to Loomis Street was completed.

### SOMERVILLE

As part of the North Gaston Avenue study, the Planning Board engaged the community in its work to determine whether North Gaston Avenue between Union Avenue & East Main Street is an "area in need of rehabilitation," an "area in need of redevelopment," or should be addressed through land use zoning.

Rutgers University Bloustein School agreed to address design and implementation planning for recreational areas within the Somerville Landfill.

Retail space at The Edge on West Main Street was completed with the arrival of Starbucks, Weight Watchers, Sports Clips, and Wolfgang's Steak House. Wine Chateau, offering a selection of wines from around the world, is expected to open in 2015.

New Jersey Transit designated a developer for the land adjacent to the Somerville Landfill and south of the Somerville Train Station. NJ Transit has proposed a residential development for that area.

Somerville completed the historic restoration of Borough Hall utilizing the Somerset County Historic Preservation Program.



*Season 52 Fresh Grill is now located in the northwestern portion of the Bridgewater Commons*



Stonebridge at Raritan



Wolfgang's Steak House at The Edge at West Main Street

## 2014 REGIONAL CENTER OFFICERS & BOARD

Chair: Troy Fischer  
Vice-Chair: Jason Dameo  
Treasurer: Freeholder Director Peter Palmer  
Secretary: James Ruggieri (non-voting position)

At-large Private/Institutional Sector Representatives  
Troy Fischer, Chair, Senior General Manager,  
Bridgewater Commons\*  
James Driscoll, Site Manager, Workplace Solutions,  
Johnson & Johnson Company\*  
Jason Dameo, General Manager, Dameo Companies

Somerset County Board of Chosen Freeholders  
Patrick Scaglione, Freeholder\*  
(Freeholder Director Peter Palmer, Alt. \*)

Somerset County Planning Board  
Bernie Navatto, Chair, Somerset County Planning Board  
Walter Lane, Director of Planning, Somerset County

Bridgewater Township  
Mayor Daniel J. Hayes, Jr.\*  
Councilwoman Christine Henderson-Rose  
Planner Scarlett Doyle  
Henry E. Reynolds, Jr., local private/institutional sector representative

Raritan Borough  
Mayor Jo-Ann Liptak\*  
Councilwoman Denise Carra  
Planner David Maski  
Don Christensen, local private/institutional sector representative

Somerville Borough  
Mayor Brian Gallagher\*  
Councilman Dennis Sullivan  
Planning Board Vice-Chair Lisa Yates  
Rick St. Pierre, local private/institutional sector representative

Somerset County Business Partnership  
Michael Kerwin, President/CEO  
(John Maddocks, Alternate)

Somerset County Park Commission  
Ray Brown, Secretary/Executive Director  
(Cynthia Sullivan, Alternate)

\*RCP Executive Committee member



### THE REGIONAL CENTER

BRIDGEWATER, RARITAN, SOMERVILLE • SOMERSET COUNTY, NEW JERSEY  
Contact: Somerset County Planning Board • Post Office Box 3000, Somerville, New Jersey 08876  
Phone 908-231-7021 • [www.regionalcenterpartnership.org](http://www.regionalcenterpartnership.org)

